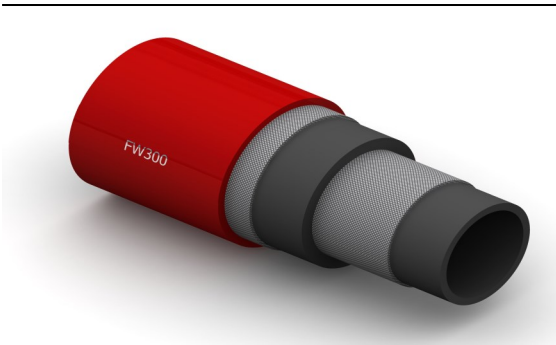


FW3 Seawater Delivery

Fire Resistant Firewater Deluge Hose



Construction:

Tube: Black NBR..

Reinforcement: Steel Cord Layers c/w Embedded Antistatic Wire.

Cover: Red Smooth CR.

Temperature Range: -30°C To +100°C.

Typical Application: Water Delivery, also suitable for fuel oil (with up to 50% aromatic content), sea-water, mud and general offshore suction and delivery applications.

Fire Rating: ABS Approved - ISO 15540/15541 Compliant, 800°C for 30 mins.

Branding:

Continental ContiTech FW300

Silver text

Technical Data:

Part No	Inside Dia		O.D.	Working Pressure		Minimum Burst Pressure		Min Bend Rad	Weight
	mm	Inch		Bar	PSI	Bar	PSI		
FW3-032	51	2	79	21	305	104	1500	400	4.78
FW3-048	76	3	104	21	305	104	1500	500	7.13
FW3-064	102	4	130	21	305	104	1500	600	7.46
FW3-080	127	5	155	21	305	104	1500	1030	9.56
FW3-096	152	6	184	21	305	104	1500	1140	14.02
FW3-128	203	8	242	21	305	104	1500	1250	22.54

Dunlop Oil & Marine Ltd
 Jubilee Industrial Estate
 Ashington, Northumberland
 NE63 8UB United Kingdom
www.dunlop-oil-marine.co.uk

Continental 
CONTITECH

The content of this publication is not legally binding and is provided as information only. The trademarks displayed in this publication are the property of Continental AG and/or its affiliates. Copyright © 2011 ContiTech AG. All rights reserved.

For complete information go to:
www.contitech.de/discl_en